


---

---

---

---

---

---

---

## Goals

- Enhance value and flexibility
- Reduce current (and future) burden
- Sustain rigor
- Integrate other HLC processes and data requirements
- Make as cost efficient as possible
- Increase credibility, value, transparency, information to public

---

---

---

---

---

---

---

## Pathways (back cover)

Pathways for Seeking and Maintaining Accreditation*			
Initial or Continued Candidacy	Initial Accreditation	Continued Accreditation	
CANDIDACY PATHWAY	FOUNDATIONAL PATHWAY	AGIP PATHWAY	OPEN PATHWAY
Required for all institutions seeking initial or continued candidacy or initial accreditation	Required for all institutions granted initial accreditation through the first ten years	All accredited institutions determined to require this pathway	All eligible institutions that elect to use this pathway and are admitted by a peer panel
All institutions determined by staff to be eligible for this pathway			
Annual Institutional Data Update (AIDU) Filing and Analysis			
<ul style="list-style-type: none"> <li>• Two year cycle</li> <li>• Comprehensive self-study process and report</li> <li>• On-site evaluation visit</li> <li>• After two years, evaluation for continued candidacy or initial accreditation</li> <li>• Four year limit</li> </ul>	<ul style="list-style-type: none"> <li>• Five year cycle</li> <li>• Comprehensive self-study process and report</li> <li>• On-site evaluation visit</li> <li>• Quality assurance and improvement plan</li> <li>• Minimum of one interim report</li> </ul>	<ul style="list-style-type: none"> <li>• Seven year cycle</li> <li>• Periodic systems appraisals and quality checkup visit</li> </ul>	<ul style="list-style-type: none"> <li>• Ten year cycle</li> <li>• Assurance reviews in year four (no visit) and in year ten (with visit)</li> </ul>
Follows standard Commission-wide practices on institutional change	Follows standard Commission-wide practices on institutional change	Follows standard Commission-wide practices on institutional change	<ul style="list-style-type: none"> <li>• Interim reports</li> <li>• Focused visits</li> <li>• Follows standard Commission-wide practices on institutional change</li> </ul>
Improvement is embedded with assurance	Improvement is embedded with assurance	Improvement focused action projects and strategy forums	<ul style="list-style-type: none"> <li>• Quality initiative in years 5-9</li> <li>• Project approval at beginning (with visit or Commission facilitated process)</li> <li>• Report review at conclusion (no visit)</li> </ul>

---

---

---

---

---

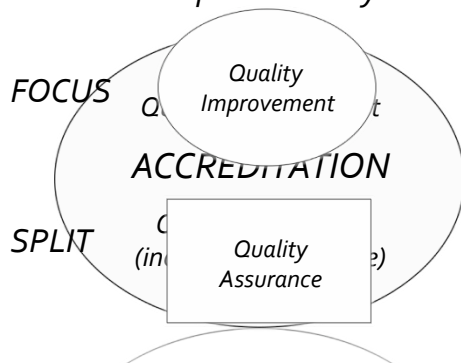
---

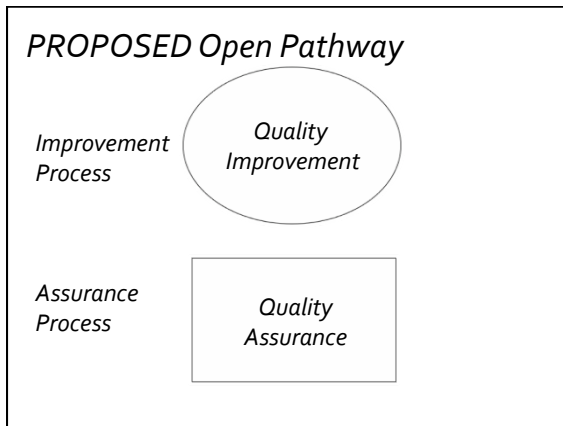
---

- Candidacy Pathway
- Foundational Pathway
- Open Pathway
- AQIP Pathway

YEAR ONE	YEAR TWO	YEAR THREE	YEAR FOUR	YEAR FIVE
AIDU/ Filed and Analyzed	AIDU/ Filed and Analyzed	AIDU/ Filed and Analyzed	AIDU/ Filed and Analyzed	AIDU/ Filed and Analyzed
Quality Assurance and Improvement Plan	<p>The Commission-defined plan includes annual monitoring of financial and non-financial indicators, at least one internal report, and any other Commission prescribed activities.</p> <p>By year five, the institution writes a comprehensive self-study report that addresses the Criteria, Federal Compliance requirements, and all other defined requirements and contingencies of the Commission as defined in the Quality Assurance and Improvement Plan.</p>			Comprehensive Evaluation (with visit) for Reaffirmation of Accreditation

1. Shortened cycle guided by individualized plan.
2. Allows intensive focus and intervention.





---

---

---

---

---

---

---

**Open Pathway Assurance Process**

- Evidence File (uploaded materials)
- Assurance Argument (the narrative)
- Peer Review Process
- HLC's Technology System "contains" all of it

---

---

---

---

---

---

---

**How will this work?**

- Web-based technology developed and maintained by Commission— (think course management system)
- System allows for ongoing storage of information and timed access for:
  - Commission
  - Institution
  - Peer Reviewers

---

---

---

---

---

---

---

### *Open Pathway: Evidence File*

*Institutional  
Documents  
Accumulate &  
Update Evidence*

1. Institution uploads electronic documents materials; tags to Criteria, Core Components, Federal Compliance requirements.
2. Only evidence related to Assurance Argument allowed; evidence accumulated over time.

---

---

---

---

---

---

---

### *Open Pathway: Evidence File*

*Institutional  
Documents  
Accumulate &  
Update Evidence*

*Commission  
Documents  
Supplement  
to Review*

1. AIDU information, public comments received.
2. Previous accreditation documents (team reports, appraisals, etc.)
3. Official communications, actions, etc.

---

---

---

---

---

---

---

### *Open Pathway: Evidence File*

*Evidence File  
Accumulate &  
Update Evidence*

*Commission  
Documents  
Supplement  
to Review*

*Assurance  
Argument  
Write, Update*

1. Provides brief but thorough analysis of evidence.
2. Makes case institution meets Criteria and complies with federal requirements.
3. Links to selected materials in Evidence File.

---

---

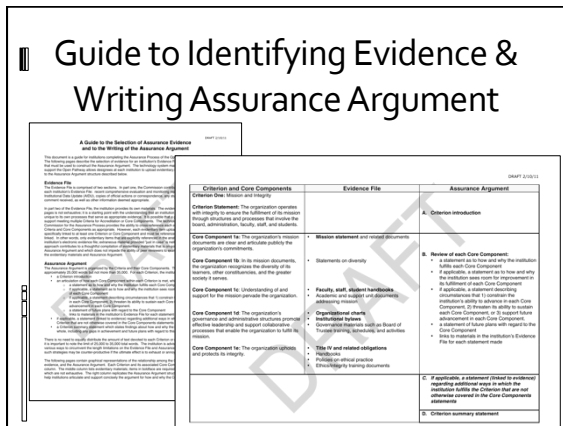
---

---

---

---

---




---

---

---

---

---

---

---

---

## Assurance Argument

- Approximately 25,000 words, no more than 35,000 ("legal brief")
- Organized by Criteria and Core Components
- Not what you remember as self-study or self-study process
- Highly structured format
- Maintained online (updated versus redone) in HLC's technology system

---

---

---

---

---

---

---

---

## Assurance Argument

- For each criterion, institution offers:
  - Criterion introduction
  - An articulation of how each Core Component within each Criterion is met: *(how and why it is met, room for improvement, constraints, threats to maintain it, opportunities, future plans)*
  - Links to evidence in materials in Evidence File
  - A Criterion Summary

---

---

---

---

---

---

---

---

## Assurance Process Peer Review

1. Individual Peer Review
  - Assurance Analysis
  - Assurance Recommendation
2. Consensus Development
3. Team as a Whole
  - Assurance Analysis
  - Assurance Recommendation

---

---

---

---

---

---

---

---

## Reminders on Evidence

- Assurance Argument follows Criteria and Core Components; evidence expected to as well
- Guide is illustrative, not exhaustive, allows flexibility
- Upload evidence once, cross-reference multiple times
- Everything uploaded must be used, tagged, actual evidence, or it is not wanted

---

---

---

---

---

---

---

---

### Assurance Process (p. 8)

	Year 1	Year 2	Year 3	Year 4	Year 5	Year 6	Year 7	Year 8	Year 9	Year 10
Assurance Process	File	AIDU Filed	AIDU Filed	AIDU Filed	AIDU Filed	AIDU Filed	AIDU Filed	AIDU Filed	AIDU Filed	AIDU Filed
	AIDU Analyzed	AIDU Analyzed	AIDU Analyzed	AIDU Analyzed	AIDU Analyzed	AIDU Analyzed	AIDU Analyzed	AIDU Analyzed	AIDU Analyzed	AIDU Analyzed
Assurance Argument	Institution may contribute documents to Evidence File			Assurance Argument	Institution may contribute documents to Evidence File			Assurance Argument	Assurance Argument	
Assurance Review and Visit	Assurance Review and Visit			Assurance Review and Visit	Assurance Review and Visit			Assurance Review and Visit	Assurance Review and Visit	
Action on AIDU	Action on AIDU	Action on AIDU	Action on AIDU	Action on AIDU	Action on AIDU	Action on AIDU	Action on AIDU	Action on AIDU	Action on AIDU	Action on AIDU
	Results as Needed	Results as Needed	Results as Needed	Results as Needed	Results as Needed	Results as Needed	Results as Needed	Results as Needed	Results as Needed	Results as Needed

1. AIDU filed annually by all institutions. Results reviewed; action as needed.
2. Institution uploads evidence throughout, links it to Criteria and Federal requirements.

---

---

---

---

---

---

---

---

### Assurance Process (p. 8)

	Year 1	Year 2	Year 3	Year 4	Year 5	Year 6	Year 7	Year 8	Year 9	Year 10
Assurance Process	AIDU Filed	AIDU Filed	AIDU Filed	AIDU Filed	AIDU Filed	AIDU Filed	AIDU Filed	AIDU Filed	AIDU Filed	AIDU Filed
	AIDU Analyzed	AIDU Analyzed	AIDU Analyzed	AIDU Analyzed	AIDU Analyzed	AIDU Analyzed	AIDU Analyzed	AIDU Analyzed	AIDU Analyzed	AIDU Analyzed
	Institution may contribute documents to Evidence File			Assurance Argument	Institution may contribute documents to Evidence File					Assurance Argument
Commission Action	Action on AIDU Results as Needed	Action on AIDU Results as Needed	Action on AIDU Results as Needed	Action on Assurance Review	Action on AIDU Results as Needed	Action on AIDU Results as Needed	Action on AIDU Results as Needed	Action on AIDU Results as Needed	Action on AIDU Results as Needed	Action on AIDU Results as Needed

3. Institution analyzes evidence; writes or updates Assurance Argument.
4. Two Assurance Reviews: Year 4 (w/o visit) to identify issues proactively, Year 10 (w/visit).

### Assurance Process (p. 8)

	Year 1	Year 2	Year 3	Year 4	Year 5	Year 6	Year 7	Year 8	Year 9	Year 10
Assurance Process	AIDU Filed	AIDU Filed	AIDU Filed	AIDU Filed	AIDU Filed	AIDU Filed	AIDU Filed	AIDU Filed	AIDU Filed	AIDU Filed
	AIDU Analyzed	AIDU Analyzed	AIDU Analyzed	AIDU Analyzed	AIDU Analyzed	AIDU Analyzed	AIDU Analyzed	AIDU Analyzed	AIDU Analyzed	AIDU Analyzed
	Institution may contribute documents to Evidence File			Assurance Argument	Institution may contribute documents to Evidence File					Assurance Argument
Commission Action	Action on AIDU Results as Needed	Action on AIDU Results as Needed	Action on AIDU Results as Needed	Action on Assurance Review	Action on AIDU Results as Needed	Action on AIDU Results as Needed	Action on AIDU Results as Needed	Action on AIDU Results as Needed	Action on AIDU Results as Needed	Action on AIDU Results as Needed

5. Both reviews require fewer reviewers and shorter timeframe in most cases.
6. Reviewers submit report.
7. Commission will disclose (abbreviated form) results of assurance reviews in standard format.

### Diminishing Burden

- Accumulated evidence in Commission-hosted Evidence File
- Periodic updating by institution
- Assurance Argument that is brief, thorough, sustained across cycles
- Other HLC processes integrated
- Proactive review with time to address issues

## Consider the alignment...

### Revised Criteria

- ✓ Clearer, more explicit language
- ✓ Core components have individual, separate ideas
- ✓ Inclusive of all requirements (concepts in position statements, policies integrated)

---

---

---

---

---

---

---

## PROPOSED Open Pathway

Improvement  
Process

Quality  
Improvement

Assurance  
Process

Quality  
Assurance

---

---

---

---

---

---

---

## Open Pathway: Improvement Process (Flexible Timeframe, p. 8)

	Year 1	Year 2	Year 3	Year 4	Year 5	Year 6	Year 7	Year 8	Year 9	Year 10
Improvement Process										

1. Consists of a Quality Initiative with appropriate scope, significance, clear outcomes, evidence of commitment and capacity, realistic timeline
2. Conducted anytime between years 5 and 9, may draw on Year 4 Assurance Review

---

---

---

---

---

---

---



**Improvement Process**

*Quality  
Initiative  
Proposal*

*Three variations*

1. Institution designs and proposes own (5-10 page document following a template)
2. Institution proposes from menu of topics and options (5-10 page document, using a template)
3. Institution chooses Commission-facilitated program, such as the Academy

---

---

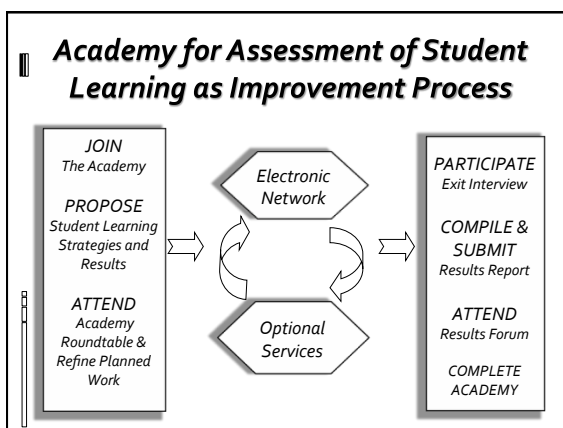
---

---

---

---

---




---

---

---

---

---

---

---

**Possibilities**

- Collaborative initiatives, shared topics
- Statewide or system endeavors
- Agency-linked ideas (AAC&U, CQIN, FYE)
- Optional electronic network, publishing and sharing information on initiatives
- Joint research, comparative data, post-graduation, longitudinal endeavors

---

---

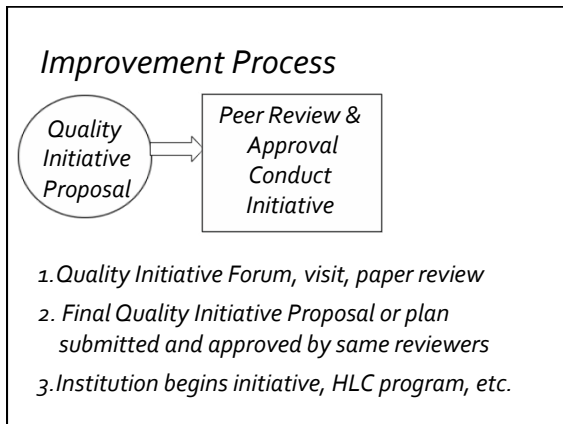
---

---

---

---

---




---

---

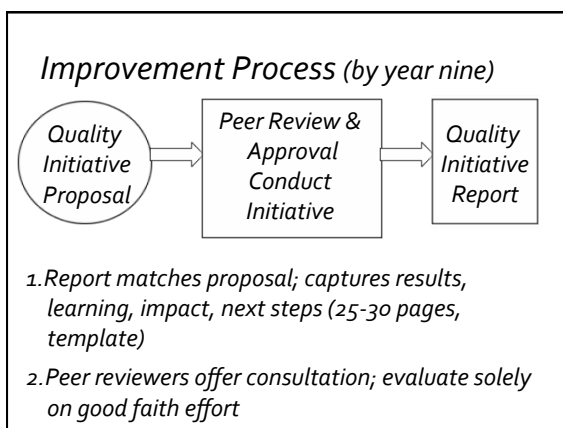
---

---

---

---

---




---

---

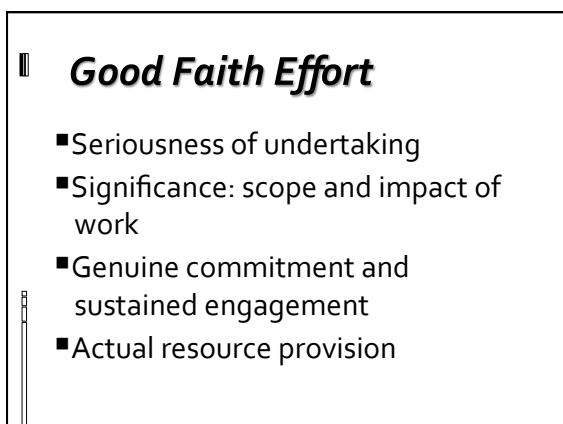
---

---

---

---

---




---

---

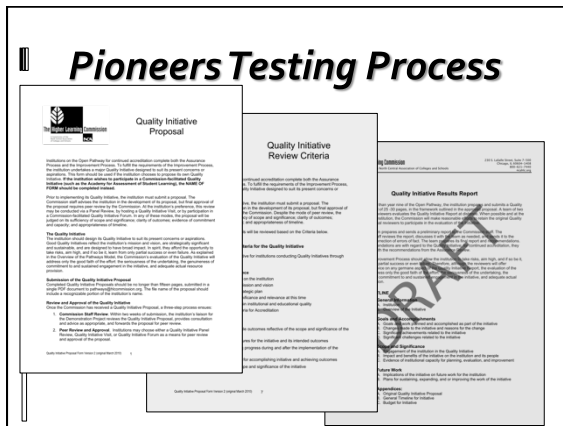
---

---

---

---

---




---

---

---

---

---

---

---

---

**Goals**

- Take risks
- Aim high
- Learn from success or failure
- Strive for significant impact
- Sincere, good faith effort
- Institutions may publicize results and learning; Commission will not

---

---

---

---

---

---

---

---

Reaffirmation of Accreditation											
	Year 1	Year 2	Year 3	Year 4	Year 5	Year 6	Year 7	Year 8	Year 9	Year 10	
Assurance Process	AIDU Filed	AIDU Filed	AIDU Filed	AIDU Filed	AIDU Filed	AIDU Filed	AIDU Filed	AIDU Filed	AIDU Filed	AIDU Filed	
	AIDU Analyzed	AIDU Analyzed	AIDU Analyzed	AIDU Analyzed	AIDU Analyzed	AIDU Analyzed	AIDU Analyzed	AIDU Analyzed	AIDU Analyzed	AIDU Analyzed	
	Institution may contribute documents to Evidence File			Assurance Argument	Institution may contribute documents to Evidence File					Assurance Argument	
Improvement Process											
Commission Action											

↑

---

---

---

---

---

---

---

---

### *Timeline*

- 2009-2011: Demonstration Project begun, cohorts launched
- 2009-2011: Internal reorganization, structuring, technology
- 2012-13: All in place and tested; cohort groups actually complete elements of model and technology

---

---

---

---

---

---

---

### *Timeline*

- 2012-13: Institutions begin transition into Pathways (more in a minute); Foundational Pathway launch
- 2013: New Criteria effective; Evidence File open to institutions
- August 2015: PEAQ ends

---

---

---

---

---

---

---

### *Transition*

- Begin Pathways in relationship to last or next PEAQ reaffirmation (AQIP appraisal & reaffirmation)
- Begin at different points (download new Pathways booklet after 4/15)
- No one other than Pioneer Institutions has Assurance Review until 2015-16.

---

---

---

---

---

---

---

### Transition Calculator (p. 9)

Next PEAQ Reaffirmation Visit Scheduled	PEAQ Visit Actually Takes Place	Year the Institution Transitions to the Open Pathway	Place on Open Pathway Cycle at Transition
2009-10	2009-10	2012-13	Year 3*
2010-11	2010-11	2012-13	Year 2*
2011-12	2011-12	2012-13	Year 1
2012-13	2012-13	2013-14	Year 1
2013-14	2013-14	2014-15	Year 1
2014-15	2014-15	2015-16	Year 1
2015-16	n/a	2012-13	Year 7
2016-17	n/a	2012-13	Year 6
2017-18	n/a	2012-13	Year 5
2018-19	n/a	2012-13	Year 4*



### QUESTIONS? IDEAS?

- Lynn Priddy, Vice President for Accreditation Services, Higher Learning Commission
- [lpriiddy@hlcommission.org](mailto:lpriiddy@hlcommission.org)

